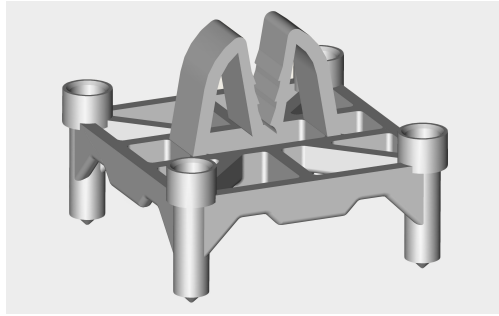


PRECAST STACKABLE CHAIR



Art Mould's Precast Chair is a versatile **Stackable Chair** with a single clip that fits mesh to 20M bar. It is made with composite material for strength, corrosion resistance and durability, while the design allows for concrete flow, and eliminating the risk of voids. Its pointy legs result in minimal contact and exposure on the panel surface.

STACKABLE CHAIR	
Size Available -	1" - 4" every 1/4" (all sizes stackable)
Rebar Size	Wire mesh - 20M bar (all in the same clip)
Colour -	Concrete Grey
Material -	Reinforced, high impact polypropylene
Chemical Resistancy -	Excellent
Packaging -	In heavy-duty UV protected poly bags Quantity varies by size
Installation -	Clip on to mesh and up to 20M rebar Stackable to create any size Can straddle bottom steel bars Spacing depends on loads

SIZING

PART #	HEIGHT	HEIGHT	PC/BAG	BAG/PALLET	PC/PALLET
SC1.0	1"	25MM	350	25	8750
SC1.25	1-1/4"	32MM	350	25	8750
SC1.5	1-1/2"	40MM	250	25	6250
SC1.75	1-3/4"	45MM	250	25	6250
SC2.00	2"	50MM	250	25	6250
SC2.25	2-1/4"	58MM	200	25	5000
SC2.50	2-1/2"	63MM	200	25	5000
SC2.75	2-3/4"	70MM	150	25	3750
SC3.00	3"	75MM	150	25	3750
SC3.25	3-1/4"	77MM	100	25	2500
SC3.50	3-1/2"	85MM	100	25	2500
SC3.75	3-3/4"	92MM	100	25	2500
SC4.00	4"	100MM	100	25	2500

